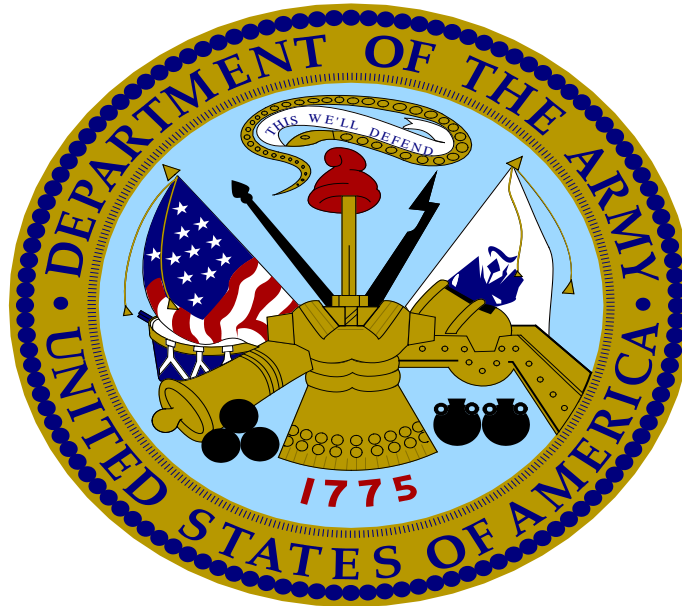




U.S. ARMY HUMAN RESOURCES COMMAND



Evaluation and Selection Systems



System Facts



- **Purpose of Evaluations:** Identify our Army's best performers and those with the greatest potential
 - Selection and Separation Boards and assignment managers are the audience
 - Requires candor and courage; frank and accurate assessment
 - Leaders must guard against “word inflation” ...words matter most
 - Allows for field impact on selection of future leaders
- **Both OER and NCOER are assessment tools ...do not counsel on assessments**
 - **OER is a forced distribution system**
 - Senior Rater top box restricted to <50%
 - Rater left most box restricted to <50%
 - OER Rater narrative focus on performance
 - OER SR narrative focus on quantifiable potential
 - NCOER SR bullets focus on excellence, performance & quantifiable potential
- **Selection & Promotion system is based on Army requirements**
 - Use the top box and quantified narratives to identify your best
 - Cannot predict selection board results on Top Box/Most Qualified or Highly Qualified labels as selection boards decide based on a series of reports (the Whole File Concept)
- **Commander is overall care-taker of all personnel systems**

Counseling is key to development



Army Evaluation Reporting System

- **Who receives evaluation reports?**
 - Officers - Warrant Officer One through Brigadier General
 - NCOs - Sergeant through Command Sergeant Major.
- **Two different Evaluation form series for two different populations.**
 - Officer Evaluation Reporting System:
 - Broader comparison, more of a generalist
 - Doctrine Based, Tactical, Broadening – Strategic
 - Noncommissioned Officer Evaluation Reporting System:
 - Highlights Strengths and Uniqueness of the NCO Corps.
 - Assess technical competence in MOS and Doctrine
 - Responsible for individual training (Teach others the trade)

Evaluations Drivers:

- CHANGE OF DUTY
- CHANGE OF RATER
- ANNUAL PERIOD (12 rated months)
- COMPLETE THE RECORD (prior to selection boards)
- RELIEF FOR CAUSE

Each report stands alone, assessments are made by supervisors in a rating relationship



Evaluation System Principles



Secondary effects of Eval System:

- Maintain discipline
- Promote leader development/professionalism by linking performance to missions and doctrine (assessed by field leaders)
- Provide feedback to rated individuals

Rating Roles:

- RATER – Performance & Counseling
 - Met Standards? Yes / No
 - Narrow, more specific
- SENIOR RATER – Potential & Mentorship
 - Capstone evaluation, spread of quality
 - Broader, more general
- REVIEWER – adherence to policy & intent
 - On OER: When required
 - On NCOER: Separate individual

The System's Components:

(as approved by CSA/SECARMY)

- Rating relationship that exists between Rater and Rated Soldier (w/oversight by Senior Rater)
- Counseling documented on support and counseling forms.
- Final assessment documented on evaluation form.

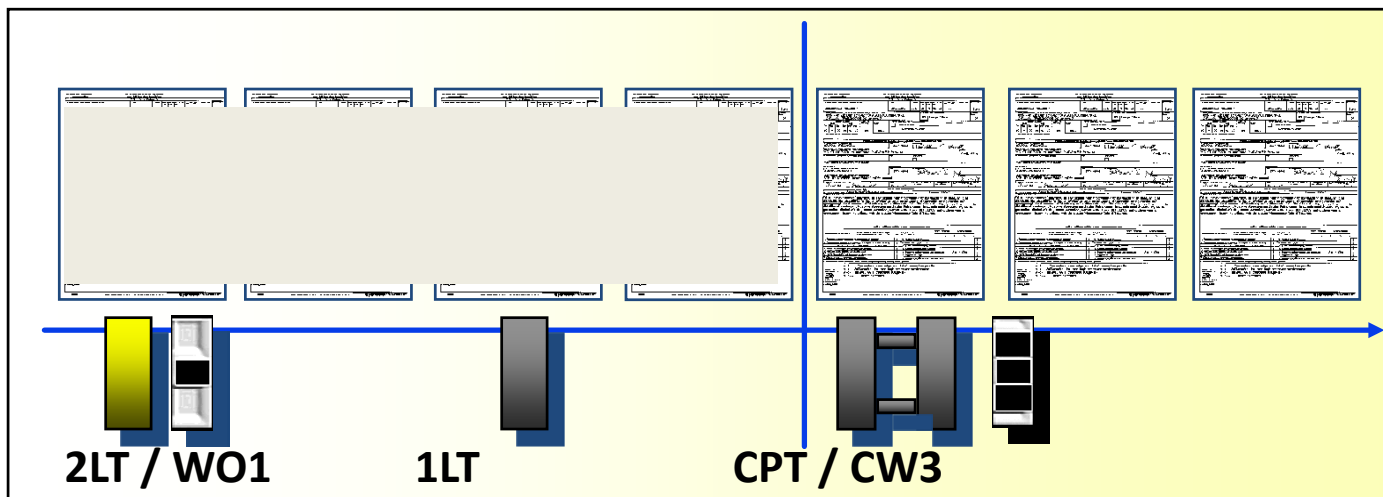
Critical Point:

Separating Rater and Senior Rater & keeping supervisors at lowest levels have been keys to success for over 32 years (since introduction of DA Form 67-8 and 2166-9)

“The eval is as important to the Army for the behavior it causes as for that which it measures.”



Moving Early OERs – What & Why



POLICY

- WO1 reports moved to restricted section of AMHRR after selection to CW3.
- LT reports moved to restricted section of AMHRR at promotion to CPT.
 - Officer Records Brief lists duty positions

**All OERs are reviewed for CPT and CW3 selection.
May be accessed for selections in special circumstances**



Strengthening the Rating Chain



Develop regulatory guidance to strengthen rating chain accountability

- **Revised policy strengthens accountability within the rating chain to maintain relationships that provide rated officers with leaders who have first-hand knowledge of their responsibilities, performance and potential.**
- **Requires approval of rating schemes / one level up (up to 3-Star HQ)**
- **Intermediate Raters limited to special branches and dual supervisor situations**
- **Supplementary Review: When there are no uniformed Army designated rating officials for the Rated Officer, an Army Officer within the organization will be designated as a Uniformed Army Advisor and perform a supplementary review.**
 - **The Uniformed Army Advisor will be an U.S. Army officer, normally senior to the senior rater, within the organization.**
 - **The Uniformed Army Advisor will monitor evaluation practices, provide assistance and advice to rating officials (as required) on matters pertaining to Army evaluations.**
 - **Applies in Joint Environments**
 - **Applies where DoD and DA Civilians serve as Rater and Senior Rater**
 - **Applies in multi-national environments**



New OER (DA Form 67-10 / Supplementary Review)



- In instances when there are **no uniformed Army designated rating officials** for the Rated Officer, an Army Officer **within the organization** will be designated as a Uniformed Army Advisor (UAA) and perform a supplementary review (IAW 623-3).
- The UAA will be an U.S. Army officer **SENIOR** to the rated officer within the organization. The UAA will **monitor evaluation practices, provide assistance and advice to rating officials (as required)** on matters pertaining to Army evaluations.

Examples:

<u>Rated Officer</u>	<u>Rater</u>	<u>Senior Rater</u>	<u>Uniformed Army Advisor</u>
CPT	SES	SES	Yes; MAJ or higher
<i>VDAS Executive Officer (CPT), rated and senior-rated by a single SES.</i>			
MAJ	GS-15	SES	Yes; LTC or higher
<i>ECC "Dwarf" (MAJ) is rated by GS-15 and senior-rated by SES.</i>			
LTC	SES	SES	Yes; COL or higher
<i>ASA (XXX) (LTC) is rated and senior-rated by a single SES.</i>			
COL	Navy ADM	Air Force GO	Yes; Senior COL or higher
<i>JS J-33 GFM Chief (COL) is rated and senior-rated by non uniformed Army officers.</i>			



Role of the Senior Rater & keys to success



- Senior Rater is the “owner” of the Evaluation and is responsible for timely completion
- Mentor/Develop your subordinates
 - Support Form – tool available to aid in defining/guiding goals and objective throughout rating period, provides feedback to rated individual -not a lot of space but should be catalyst of conversation
- Understand how our Evaluation Systems works
 - Fairly and accurately assess subordinates -participate in counseling
 - Senior Rater Narrative is key: Exclusive vs. Strong Narrative to describe subordinate
 - Quantify potential...identify your best
 - Be Careful... What you don't say is just as damaging as what you do say
- Verify/Certify your subordinates on how to assess – ask them to bring their counselings and assessments with them to their counseling
- Understand how to manage your Senior Rater profile - develop your rating philosophy
- Anticipate and project “next” Evaluation
 - Current thru date on file plus 12 months or known changes of rater
 - Complete the record dates for those being considered by a board
- Monitor when reports are required, that they're submitted on time, and unit rating schemes are current and accurate (Leader responsibility)
 - Use Interactive Web Response System (IWRS) and Evaluation Entry System (EES)
 - Use EES and AKO MyForms to submit – be aware of sequencing during transition



Role of the Rater



- **Raters must read, understand, and assess performance based on ADRP 6-22 Leadership Attributes and Competencies**
 - **Ensure rating schemes are published and understood**
 - **Provide Support Form and Counsel those you rate (mandatory)**
 - **Develop a “Rating Philosophy” and communicate it to rated officers**
 - **Advocate Officer to the Senior Rater**
 - **Recommend future Operational and Broadening Assignments on field grade form**
 - **Clearly and concisely communicate rated officer’s most significant achievements**
 - **Focus on narrative comments; selection board members use the rater’s assessment in their file deliberations**
-
- **Anticipate and project future evaluations – When & Why?**
 - **Keep senior rating officials informed of upcoming evaluations**
 - **Track evaluations from submission to HRC thru completion**



Developing a Rating Philosophy



- **Mission: Identify your best**
- **Counseling – ensure counseling is accomplished. Those that can improve will**
- **Decide how to assess (particularly) Excels based on performance and Most Qualified Based upon Potential**
- **Write well – quantify and qualify in narrative; correspond comments with box check as the system allows. Use the narrative to paint the picture**
- **Plan ahead, think series of reports (number of times you will rate an officer)**



Evaluation Narrative



- Selection boards should understand what input the Rating Chain is providing without having to guess
- Raters focus on specifics to quantify and qualify performance
- Senior raters need to amplify their potential box checks by using the narrative to clearly send the appropriate message to selection boards. Focus on potential (3 to 5 years; command, assignment, schooling and promotion)
- Cannot mention Box Check in the narrative
- Be careful with your narrative:
 - ***What is not said can have the same impact as what is said***
 - ***Don't say the same thing for all your people (Boards can easily detect repeated verbiage)***
 - ***Avoid using the same verbiage year to year for the same officer (modified cut and paste)***
 - ***Accurately and fairly assess all officers regardless of branch and functional area***
 - Don't be afraid of Referred Reports



Rater Narrative (Exclusive)



Rater overall assessment of rated officer's performance compared to officers in same grade

- Limited to Company and Field Grade forms

e. **This Officer's Overall Performance is Rated as:** (Select one box representing Rated Officer's overall performance compared to others of the same grade whom you have rated in your career. Managed at less than 50% in EXCELS.) I currently rate 9 Army Officers in this grade.

EXCELS

OR

PROFICIENT

CAPABLE

UNSATISFACTORY

Comments: MAJ Smith's performance is clearly the best of the 9 majors I currently rate, and his performance ranks within the top 1% of majors with whom I've worked or encountered in over 20 years of service.

Use of exclusive narrative should be used to amplify box checks and in instances where small or immature profiles exist; or on a proficient indication following an excels (if warranted)

Excels Defined:

Results far surpass expectations. The officer readily (fluently/naturally/effortlessly) demonstrates a high level of the all attributes and competencies. Recognizes and exploits new resources; creates opportunities. Demonstrates initiative and adaptability even in highly unusual or difficult situations. Emulated; sought after as expert with influence beyond unit. Actions have significant, enduring, and positive impact on mission, the unit and beyond. Innovative approaches to problems produce significant gains in quality and efficiency.



Rater Narrative (Strong)



Rater overall assessment of rated officer's performance compared to officers in same grade

- Limited to Company and Field Grade forms

e. This Officer's Overall Performance is Rated as: (Select one box representing Rated Officer's overall performance compared to others of the same grade whom you have rated in your career. Managed at less than 50% in EXCELS.) I currently rate 9 Army Officers in this grade.

EXCELS

PROFICIENT

CAPABLE

UNSATISFACTORY

Comments: MAJ Smith performs within the top third of the majors I currently rate, and his performance ranks within the top 10% of majors with whom I've worked or encountered in over 20 years of service.

Proficient:

Consistently produces quality results with measurable and lasting improvement in unit performance. Consistently demonstrates a high level of performance for each attribute and competency. Proactive in challenging situations. Habitually makes effective use of time and resources; improves position procedures and products. Positive impact extends beyond position expectations.



Rater Narrative



Rater overall assessment of rated officer's performance compared to officers in same grade

- Limited to Company and Field Grade forms

e. **This Officer's Overall Performance is Rated as:** (Select one box representing Rated Officer's overall performance compared to others of the same grade whom you have rated in your career. Managed at less than 50% in EXCELS.) I currently rate 9 Army Officers in this grade.

EXCELS

PROFICIENT

CAPABLE

UNSATISFACTORY

Comments: MAJ Smith's performance over this rating period has been commensurate with his grade and time in service. He has completed all assigned tasks to standard in a timely manner, and he is able to manage complex assignments. A critical thinker who works well with others.

Capable:

Meets requirements of position and additional duties. Capable of demonstrating Soldier attributes and competencies and frequently applies them; Actively learning to apply them at a higher level or in more situations. Aptitude, commitment, competence meets expectations. Actions have a positive impact on unit or mission but may be limited in scope of impact or duration.



Senior Rater Narrative (Exclusive)



PART VI - SENIOR RATER

a. POTENTIAL COMPARED WITH OFFICERS SENIOR RATED IN SAME GRADE (OVERPRINTED BY DA)

MOST QUALIFIED
(limited to 49%)

HIGHLY QUALIFIED

QUALIFIED

NOT QUALIFIED

b. I currently senior rate 27 Army Officers in this grade.

c. COMMENTS ON POTENTIAL:

MAJ Smith is my #1 major of the 27 I currently senior rate, and one of the best officers that I've seen in over 25 years of service—top 1%. Already shows Battalion Command potential, a must-promote BZ to LTC and Battalion Command. Send to SSC at the earliest opportunity—a future senior leader in the Corps and the Army.

d. List 3 future SUCCESSIVE assignments for which this Officer is best suited:

BN Commander, CMTC OC, TSC G4

Use of exclusive narrative should be used to amplify box checks and in instances where small or immature profiles exist; or on a HIGHLY QUALIFIED indication following a MOST QUALIFIED (if warranted)

MOST QUALIFIED: Strong potential for BZ and CMD; potential ahead of peers



Senior Rater Narrative (Strong)



PART VI - SENIOR RATER

a. POTENTIAL COMPARED WITH OFFICERS SENIOR RATED IN SAME GRADE (OVERPRINTED BY DA)

MOST QUALIFIED
(limited to 49%)

HIGHLY QUALIFIED

QUALIFIED

NOT QUALIFIED

b. I currently senior rate **27** Army Officers in this grade.

c. COMMENTS ON POTENTIAL:

MAJ Smith is my #4 major of the 27 I currently senior rate, and one of the best officers that I've seen in over 25 years of service— easily top 10%. Already shows Battalion Command potential; promote to LTC and select for Battalion Command followed by SSC.

d. List 3 future SUCCESSIVE assignments for which this Officer is best suited:

BN Commander, CMTC OC, TSC G4

HIGHLY QUALIFIED: Strong potential for promotion with peers



Senior Rater Narrative



PART VI - SENIOR RATER

a. POTENTIAL COMPARED WITH OFFICERS SENIOR RATED IN SAME GRADE (OVERPRINTED BY DA)

MOST QUALIFIED
(limited to 49%)

HIGHLY QUALIFIED

QUALIFIED

NOT QUALIFIED

b. I currently senior rate **27** Army Officers in this grade.

c. COMMENTS ON POTENTIAL:

MAJ Smith has clearly demonstrated the potential to continue to serve at this grade. Bob possesses outstanding writing skills that would support developing instructional manuals. Consider for promotion.

d. List 3 future SUCCESSIVE assignments for which this Officer is best suited:

Brigade Staff, Division Staff, IMCOM

MOST QUALIFIED: Strong potential for BZ and CMD; potential ahead of peers

HIGHLY QUALIFIED: Strong potential for promotion with peers

QUALIFIED: Capable of success at the next level; promote if able

NOT QUALIFIED: Not recommended for promotion



What do boards focus on?



- **3 Parts to a Board file**
- DA Photo
- ORB
- AMHRR (OERs, Disciplinary Data, Awards, AER)

1. Senior Rater Section:

- Narrative
- DA Label Information (if applicable)
- Population Size

2. Duty Description

3. Number of Rated Months

4. Rater Narrative

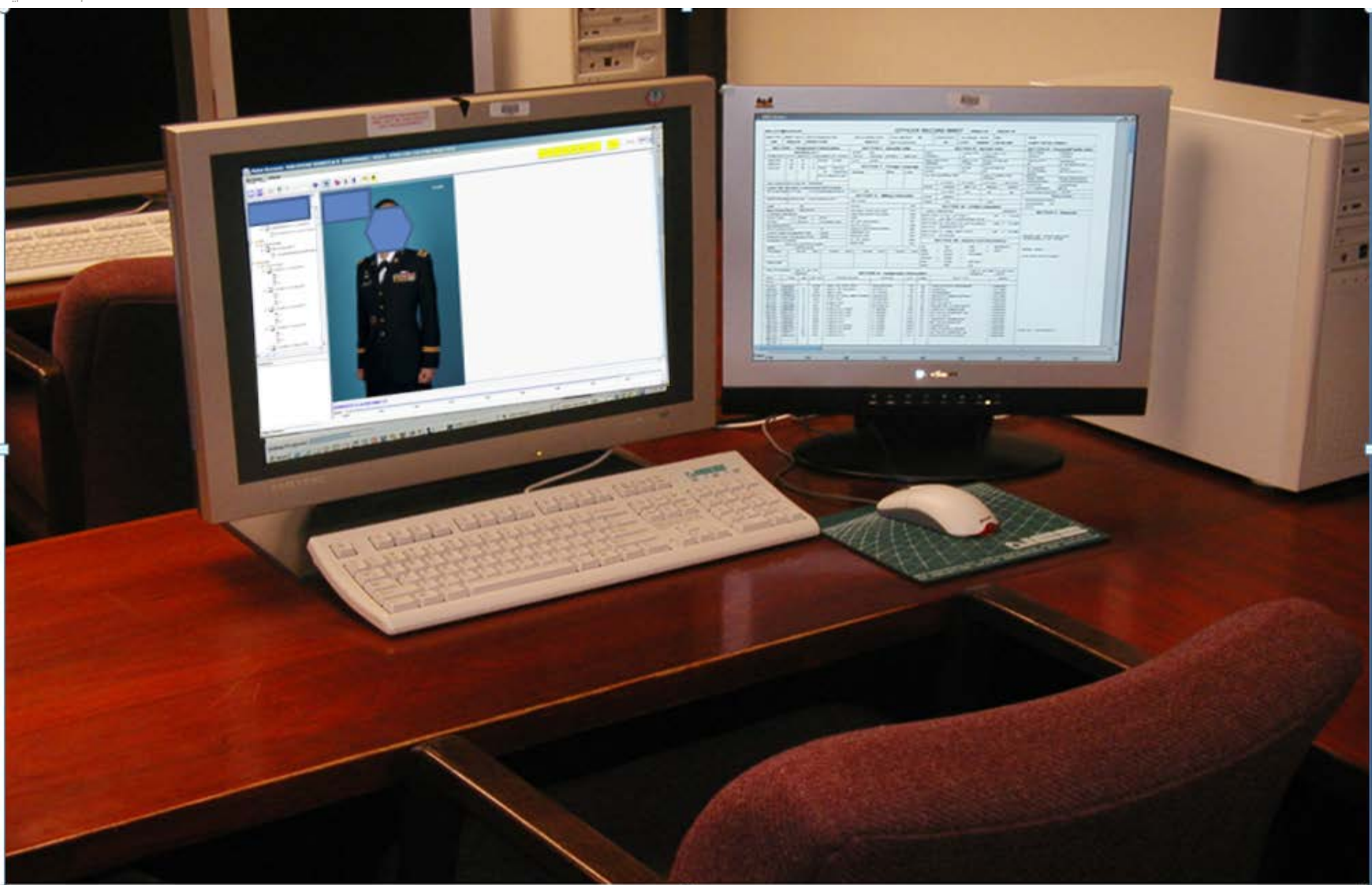
- Narrative
- DA Label Information (if applicable)
- Population Size

5. Intermediate Rater Narrative (if used)

**Quantified and Qualified, Descriptive
Strong vs. Exclusive**



Army Selection Board System





Board Screenshot



Vote Screen: (VOTER11) / 0554 - FY05 COL CSA CMD PRACTICE

Action View



FIELD GRADE PLATE (O4 - O5; CW3 - CW5) OFFICER EVALUATION REPORT
For use of this form, see AR 623-3; the proponent agency is DCS, G-1.

PART I - ADMINISTRATIVE (Rated Officer)

1. NAME (Last, First, Middle Initial): XXXXXXX, XXXXXX X
2. SSN: 999-99-9999
3. RANK: LTC
4. DATE OF RANK (YYYYMMDD): 20120101
5. BRANCH: AR
6. COMPONENT (Select Code):
7. UNIT, ORG., STATION, ZIP CODE OR APO, MAJOR COMMAND: 2nd Brigade, 3rd Division, Fort Hood, TX 76221, FORSCOM
8. UIC: X12AAA
9. REASON FOR SUBMISSION: 02 | Annual
10. PERIOD COVERED: FROM 20130402 THRU 20140401
11. RATED MONTHS: 12
12. NON RATED CODES:
13. NO. OF ENCLOSURES: 0
14. RATED OFFICER'S EMAIL ADDRESS (gov or mil): ltcX.mil@email.mil

PART II - AUTHENTICATION (Rated Officer's signature verifies officer has seen completed OER Parts I-VI and the administrative data is correct)

15. NAME OF RATER (Last, First, Middle Initial): XXXXXX, XXXXXX X
16. SIGNATURE: [Redacted]
17. DATE (YYYYMMDD): 901-03-0602
18. RANK: COL
19. POSITION: Brigade Commander
20. EMAIL ADDRESS (gov or mil): XXXX.mil@email.mil
21. NAME OF INTERMEDIATE RATER (Last, First, Middle Initial):
22. SIGNATURE: [Redacted]
23. RANK: [Redacted]
24. POSITION:
25. DATE (YYYYMMDD):
26. EMAIL ADDRESS (gov or mil): XXXXXXXX.mil@email.mil
27. NAME OF SENIOR RATER (Last, First, Middle Initial): XXXXXXXXXX, XXXXXXXXXX X
28. SIGNATURE: [Redacted]
29. RANK: BG
30. POSITION: Deputy Commanding General
31. DATE (YYYYMMDD): 901-03-0603
32. EMAIL ADDRESS (gov or mil):
33. SENIOR RATER'S ORGANIZATION: HQ, An Army Command
34. BRANCH: GO
35. COMPONENT: RA
36. SENIOR RATER PHONE NUMBER: (502) 613-0019
37. DATE (YYYYMMDD):
38. SIGNATURE: [Redacted]

39. This is a referred report, do you wish to make comments?
 Referred Yes, comments are attached No

40. Supplementary Review Required: Yes No

41. RANK: [Redacted]
42. POSITION: [Redacted]
43. COMMENTS ENCLOSED: Yes No
44. SIGNATURE: [Redacted]
45. DATE (YYYYMMDD): 20140301
46. USAF Date (YYYYMMDD): 20140301

PART III - DUTY DESCRIPTION

47. PRINCIPAL DUTY TITLE: Brigade Deputy Commander
48. POSITION ABBR/BRANCH: DIA

C. SIGNIFICANT DUTIES AND RESPONSIBILITIES
Deputy Commander for a Brigade consisting of a multitude of diverse battalions dispersed across the Southeastern United States and Puerto Rico. Manages and directs a staff of thirty nine Soldiers, Civilians, and Contract personnel, providing C4I and logistical support to assigned units. As the Chief of Staff, orchestrates, integrates, and assists in each phase of the Military Decision Making Process. Responsible for business resources, command and supply discipline, property accountability, signal and automation support, and operations. Oversees execution of an annual budget in excess of 5 million dollars.

PART IV - PERFORMANCE EVALUATION - PROFESSIONALISM, COMPETENCIES, AND ATTRIBUTES (Rater)

49. APFT Pass/Fail/Profile: PASS Date: 20140312 Height: 70 Weight: 189 Within Standard? YES
Comments required for "Failed" APFT, or "Profile" when it precludes performance of duty, and "No" for Army Weight Standards? [Reset Rank & APFT/Pass/Fail/Profile] Scored a 300 on the APFT.

50. THIS OFFICER POSSESSES SKILLS AND QUALITIES FOR THE FOLLOWING BROADENING ASSIGNMENTS

51. THIS OFFICER POSSESSES SKILLS AND QUALITIES FOR THE FOLLOWING OPERATIONAL ASSIGNMENTS

52. SIGNATURE: [Redacted]
53. DATE (YYYYMMDD):
54. LTC X displays incredible character at all times and can always be counted on to do what is right. He fosters a climate of dignity and respect and fully supports the EO, EEO, and the Commander's SHARP program.

C2BR - SIGNAL TRAINING AND STRATEGIC SPT

55. Provide narrative comments which demonstrate **EXCELLENCE** regarding field grade competencies and attributes in the Rated Officer's current duty position. i.e. demonstrates excellent presence, confidence and resilience in expected duties and unexpected situation, equates to external influence on the mission or taskings and organization, prioritizes limited resources to accomplish mission, proactive in developing others through individual coaching/counseling and mentoring, active learner to master organizational level knowledge, critical thinking and visioning skills, anticipates and provides for subordinates on-the-job needs for training and development, effective communicator across echelons and outside the Army chain of command, effective at engaging others, presenting information and recommendations and persuasion, highly proficient at critical thinking, judgment and innovation, proficient in utilizing Army design method and other to solve complex problems, uses all influence techniques to empower others, proactive in gaining trust in negotiations, remains respectful, this and her. Fully supports SHARP and creates a positive command/workplace environment.

56. This Officer's overall Performance is Rated as: (Select one box representing Rated Officer's overall performance compared to others of the same grade whom you have rated in your career. Managed at less than 50% in EXCELS.)

HQDA COMPARISON OF THE RATER'S PROFILE AND ROK CLICK AT THE TIME THIS REPORT PROCESSED

PROFICIENT

RO: RANK SOLDIER'S NAME: [Redacted]
SR: 300-00-0000
DATE: [Redacted]
RATINGS THIS OFFICER:
R: RANK/GRADE NAME: [Redacted]
SR: 300-00-0000
TOTAL RATINGS: [Redacted]

57. Comments:
LTC X is among the top three LTCs in this brigade. He is a top performer who carefully analyzes situations and executes my intent. LTC X is a confident and capable leader who produces great results. LTC X is an influential leader who carefully employs well-thought plans and delegates tasks to subordinates and supervises them to completion. Soldiers willingly follow his lead.

58. Incredible performance by a gifted leader. LTC X ranks number 3 of 6 LTCs that I rate.

PART V - INTERMEDIATE RATER

PART VI - SENIOR RATER

59. I currently senior rate 10 Army Officers in this grade.
60. COORDINATOR OR POTENTIAL: [Redacted]
61. HQDA COMPARISON OF THE SENIOR RATER'S PROFILE AT THE TIME THIS REPORT PROCESSED: **HIGHLY QUALIFIED**
62. List 3 future **SUCCESSFUL** assignments for which this Officer is best suited:
Brigade Commander, Division G4, TSC G4

DA FORM 67-10-2, MAR 2014 Page 1 of 2 AFD LG V1.0002

Default Image Zoom 1/10 1/9 1/8 1/7 1/6 1/5 1/4 1/3 1/2 1

Voting Progress

start | Inbox - Mc... | AS85_local | ORB Viewer | Vote Screenshot... | My Docum... | Microsoft P... | 12:10 PM



MOI

+

PHOTO

ORB

FICHE

+



+

**Word
Picture
1 - 6+**

**SCORING
CRITERIA**

**SEC ARMY's
MEMORANDUM
OF INSTRUCTION**

BOARD FILE:
Official Photograph
Officer Record Brief
Official Military Personnel
File (evaluation reports,
awards, etc)

**BOARD MEMBER
EXPERIENCE &
JUDGMENT**

=

VOTE





OER Administrative Data -- PARTS I, II, III



HQDA#

nts Menu

ALL OERS HAVE THE SAME ADMIN DATA

See Privacy Act Statement in AR 623-3.

PART I - ADMINISTRATIVE (Rated Officer)

a. NAME (Last, First, Middle Initial)		b. SSN	c. RANK	d. DATE OF RANK (YYYYMMDD)	e. BRANCH	f. COMPONENT (Status Code)
g. UNIT, ORG., STATION, ZIP CODE OR APO, MAJOR COMMAND			h. UIC	i. REASON FOR SUBMISSION		
j. PERIOD COVERED FROM (YYYYMMDD) THRU (YYYYMMDD)		k. RATED MONTHS	l. NON RATED CODES	m. NO. OF ENCLOSURES	n. RATED OFFICER'S EMAIL ADDRESS (.gov or .mil)	

PART II - AUTHENTICATION (Rated officer's signature verifies officer has seen completed OER Parts I-VI and the administrative data is correct)

a1. NAME OF RATER (Last, First, Middle Initial)		a2. SSN	a3. RANK	a4. POSITION		
a5. EMAIL ADDRESS (.gov or .mil)		a6. SIGNATURE			a7. DATE (YYYYMMDD)	
b1. NAME OF INTERMEDIATE RATER (Last, First, Middle Initial)		b2. SSN (Optional)	b3. RANK	b4. POSITION		
b5. EMAIL ADDRESS (.gov or .mil)		b6. SIGNATURE			b7. DATE (YYYYMMDD)	
c1. NAME OF SENIOR RATER (Last, First, Middle Initial)		c2. SSN	c3. RANK	c4. POSITION		
c5. SENIOR RATER'S ORGANIZATION	c6. BRANCH	c7. COMPONENT		c9. EMAIL ADDRESS (.gov or .mil)		
c8. SENIOR RATER PHONE NUMBER		c10. SIGNATURE				

d. This is a referred report, do you wish to make comments? <input type="checkbox"/> Referred <input type="checkbox"/> Yes, comments are attached <input type="checkbox"/> No		e1. SIGNATURE	
f1. Supplementary Review Required? <input type="checkbox"/> Yes <input type="checkbox"/> No		f2. NAME OF REVIEWER (Last, First, Middle)	
f3. RANK	f4. POSITION	f5. Comments Enclosed <input type="checkbox"/> Yes <input type="checkbox"/> No	
f6. SIGNATURE		f7. DATE (YYYYMMDD)	
		g. MSAF Date (YYYYMMDD)	

MSAF Completion date valid within 3 years

PART III - DUTY DESCRIPTION

a. PRINCIPAL DUTY TITLE	b. POSITION AOC/BRANCH
-------------------------	------------------------

c. SIGNIFICANT DUTIES AND RESPONSIBILITIES



Part IV – Professionalism (Company Grade Form front side continued)



COMPANY GRADE PLATE (O1 - O3; WO1 - CW2) OFFICER EVALUATION REPORT For use of this form, see AR 623-3; the proponent agency is DCS, G-1.			See Privacy Act Statement in AR 623-3.		
PART I - ADMINISTRATIVE (Rated Officer)					
a. NAME (Last, First, Middle Initial)	b. SSN	c. RANK	d. DATE OF RANK (YYYYMMDD)	e. BRANCH	f. COMPONENT (Status Code)
g. UNIT, ORG., STATION, ZIP CODE OR APO, MAJOR COMMAND		h. UIC	i. REASON FOR SUBMISSION		

Rater overall assessment of rated officer's **performance** compared to officers in same grade

b. This Officer's Overall Performance is Rated as: (Select one box representing Rated Officer's overall performance compared to others of the same grade whom you have rated in your career. Managed at less than 50% in EXCELS.)
I currently rate 5 Army Officers in this grade.

HQDA COMPARISON OF THE RATER'S PROFILE AND BOX CHECK AT THE TIME THIS REPORT PROCESSED

PROFICIENT

RO: CPT SMITH, J	R: LTC BOREK, B
SSN: xxx-xx-xxxx	SSN: xxx-xx-xxxx
DATE: 20140101	TOTAL RATINGS: 1
RATINGS THIS OFFICER: 1	

CPT Smith's performance as a Company Commander has been superb. Joe demonstrated superior leadership and understanding of all aspects of command. Additionally, CPT Smith has highly advanced organizational skills and leadership ability.

a. APFT Pass/Fail/Profile: _____ Date: _____ Height: _____ Weight: _____ Within Standard? _____

Comments required for "Failed" APFT or "Profile" when it recodes performance of duty and "No" for Army Weight Standards? (Reset item a. APFT/Pass/Fail/Profile)

b. This Officer's Overall Performance is Rated As: (Select one box representing Rated Officer's Overall performance compared to others of the same grade whom you have rated in your career. Managed at less than 50% in EXCELS.)
I currently rate _____ Army Officers in this grade.

EXCELS(49%)	PROFICIENT	CAPABLE	UNSATISFACTORY
<input type="checkbox"/>	<input type="checkbox"/>	<input type="checkbox"/>	<input type="checkbox"/>

Comments:



Field Grade Form O4/O5; CW3-CW5 (front)



FIELD GRADE PLATE (O4 - O5; CW3 - CW5) OFFICER EVALUATION REPORT

For use of this form, see AR 623-3; the proponent agency is DCS, G-1.

See Privacy Act Statement in AR 623-3.

PART I - ADMINISTRATIVE (Rated Officer)

a. NAME (Last, First, Middle Initial) | b. SSN | c. RANK | d. DATE OF RANK | e. BRANCH | f. COMPONENT

PART IV - PERFORMANCE EVALUATION - PROFESSIONALISM, COMPETENCIES AND ATTRIBUTES (Rater)

a. APFT Pass/Fail: _____ DATE: _____ b. HEIGHT _____ WEIGHT: _____ WITHIN STANDARD? Yes/No: _____
(Comments required for "failed" APFT, or "profile" when precludes performance of duty, and "no" for Army weight standards)

c. THIS OFFICER POSSESSES SKILLS AND QUALITIES FOR THE FOLLOWING **BROADENING** ASSIGNMENTS:

Joint/COCOM Staff, CTC O/C, Assistant PMS (REF DA PAM 600-3/600-4)

d. THIS OFFICER POSSESSES SKILLS AND QUALITIES FOR THE FOLLOWING **OPERATIONAL** ASSIGNMENTS:

BDE XO, Division/Corps Staff, ASCC Staff (REF DA PAM 600-3/600-4)

b. THIS OFFICER POSSESSES SKILLS AND QUALITIES FOR THE FOLLOWING BROADENING ASSIGNMENTS:

c. THIS OFFICER POSSESSES SKILLS AND QUALITIES FOR THE FOLLOWING OPERATIONAL ASSIGNMENTS:

d1. Character:
(Adherence to Army Values, Empathy, and Warrior Ethos/Service Ethos and Discipline. Fully supports SHARP, EO, and EEO.)



Rater Assessment: Company Grade Plate 2LT-CPT; WO1-CW2

<small>NAME:</small>	<small>SSN</small>	<small>PERIOD COVERED: FROM (YYYYMMDD)</small>	<small>THRU (YYYYMMDD)</small>
<small>c. 1) Character: (Include narrative comments addressing Rated Officer's performance as it relates to adherence to Army Values, Empathy, and Warrior Ethos/Service Ethos and Discipline.)</small>			
<small>c. 2) Presence: (Military and Professional Bearing, Fitness, Confident,</small>			
c. 1) <u>Character:</u> (Adherence to Army Values, Empathy, and Warrior Ethos/Service Ethos and Discipline. Fully Supports SHARP, EO and EEO)	CPT Smith embodies the Army Values in all that he does. Joe tactfully instills discipline and the Warrior Ethos in his subordinates to the highest standards. He uses sound, informed judgment and upholds high ethical standards when planning, preparing, and executing operations. He fosters a climate of dignity and respect, and fully supports the EO, EEO, and the Commander's SHARP program.		
c. 2) <u>Presence:</u> (Military and Professional Bearing, Fitness, Confident, Resilient)	CPT Smith displays confidence and enthusiasm while projecting a positive command presence that permeates throughout his unit as evidenced by his company's APFT average of 275, the best in the brigade. Joe possesses the ability to handle stressful situations and maintain a professional military bearing when faced with adversity.		

- Focused on core attributes and competencies in ADRP 6-22
- More prescriptive



Field Grade Form O4/O5; CW3-CW5 (back)



d2. Provide narrative comments which demonstrate performance regarding field grade competencies and attributes in the Rated Officer's current duty position. (i.e. demonstrates excellent presence, confidence and resilience in expected duties and unexpected situation, adjusts to external influence on the mission or taskings and organization, prioritizes limited resources to accomplish mission, proactive in developing others through individual coaching counseling and mentoring, active learner to master organizational level knowledge, critical thinking and visioning skills, anticipates and provides for subordinates on –the-job needs for training and development, effective communicator across echelons and outside the Army chain of command, effective at engaging others, presenting information and recommendations and persuasion, highly proficient at critical thinking, judgment and innovation, proficient in utilizing Army design method and other to solve complex problems, uses all influence techniques to empower others; proactive in gaining trust in negotiations, remains respectful, firm and fair.)

d2. Provide narrative comments which demonstrate performance regarding field grade competencies and attributes in the Rated Officer's current duty position. (i.e. demonstrates excellent presence, confidence and resilience in expected duties and unexpected situation, adjusts to external influence on the mission or taskings and organization, prioritizes limited resources to accomplish mission, proactive in developing others through individual coaching counseling and mentoring, active learner to master organizational level knowledge, critical thinking and visioning skills, anticipates and provides for subordinates on –the-job needs for training and development, effective communicator across echelons and outside the Army chain of command, effective at engaging others, presenting information and recommendations and persuasion, highly proficient at critical thinking, judgment and innovation, proficient in utilizing Army design method and other to solve complex problems, uses all influence techniques to empower others; proactive in gaining trust in negotiations, remains respectful, firm and fair.)

Comments:

LTC X is a top performer who unfailingly analyzes situations and executes my intent. Joe is a confident and capable leader who, regardless of obstacles, always produces great results. LTC X is an influential leader across the brigade who carefully employs well-thought plans and delegates tasks that empower his subordinates with the authority to complete. Soldiers willingly follow his lead.



Part IV – Professionalism (Field Grade Form Back)



d2. Provide narrative comments which demonstrate performance regarding field grade competencies and attributes in the Rated Officer's current duty position. (i.e. demonstrates excellent presence, confidence and resilience in expected duties and unexpected situation, adjusts to external influence on the mission or taskings and organization, prioritizes limited resources to accomplish mission, proactive in developing others through individual coaching counseling and mentoring, active learner to master organizational level knowledge, critical thinking and visioning skills, anticipates and provides for subordinates on-the-job needs for training and development, effective communicator across echelons and outside the Army chain of command, effective at engaging others, presenting information and recommendations and persuasion, highly proficient at critical thinking, judgment and innovation, proficient in utilizing Army design method and other to solve complex problems, uses all influence techniques to empower others; proactive in gaining trust in negotiations, remains respectful, firm and fair. Fully supports SHARP and creates a positive command/workplace environment.)

LTC X is among the top three LTCs in this brigade. He is a top performer who carefully analyzes situations and executes my intent. LTC X is a confident and capable leader who produces great results. LTC X is an influential leader who carefully employs well-thought plans and delegates tasks to subordinates and supervises them to completion. Soldiers willingly follow his lead.

Rater overall assessment of rated officer's **performance** compared to officers in same grade

b. This Officer's Overall Performance is Rated as: (Select one box representing Rated Officer's overall performance compared to others of the same grade whom you have rated in your career. Managed at less than 50% in EXCELS.) I currently rate 5 Army Officers in this grade.

HQDA COMPARISON OF THE RATER'S PROFILE AND BOX CHECK AT THE TIME THIS REPORT PROCESSED

PROFICIENT

RO: LTC SMITH, J
SSN: xxx-xx-xxxx
DATE: 20140101
RATINGS THIS OFFICER: 1

R: COL BOREK, B
SSN: xxx-xx-xxxx
TOTAL RATINGS: 1

Joe is the best of 5 Battalion Commanders in this Brigade. Joe demonstrated superior leadership and understanding of all aspects of command.

QUALIFIED
 NOT QUALIFIED

d. List 3 future **SUCCESSIVE** assignments for which this Officer is best suited:



Senior Rater Comments



d2. Provide narrative comments which demonstrate **performance** regarding field grade competencies and attributes in the Rated Officer's current duty position. (i.e. demonstrates excellent presence, confidence and resilience in expected duties and unexpected situation, adjusts to external influence on the mission or taskings and organization, prioritizes limited resources to accomplish mission, proactive in developing others through individual coaching counseling and mentoring, active learner to master organizational level knowledge, critical thinking and visioning skills, anticipates and provides for subordinates on-the-job needs for training and development, effective communicator across echelons and outside the Army chain of command, effective at engaging others, presenting information and recommendations and persuasion, highly proficient at critical thinking, judgment and innovation, proficient in utilizing Army design method and other to solve complex problems, uses all influence techniques to empower others; proactive in gaining trust in negotiations, remains respectful, firm and fair. Fully supports SHARP and creates a positive command/workplace environment.)

COMMENTS:
LTC X is a top performer who unfailingly analyzes situations and executes my intent. Joe is a confident and capable leader who, regardless of obstacles, always produces great results. LTC X is an influential leader across the brigade who carefully employs well-thought plans and delegates tasks that empower his subordinates with the authority to complete. Soldiers willingly follow his lead.

e. This Officer's overall Performance is Rated as: (Select one box representing Rated Officer's overall performance compared to others of the same grade whom you have rated in your career. Managed at less than 50% in EXCELS.)

I currently rate _____ Army Officers in this grade.

A completed DA Form 67-10-1A was received with this report and considered in my evaluation and review: Yes No (explain in comments below)

EXCELS (49%) PROFICIENT CAPABLE UNSATISFACTORY

Comments:
Joe is the best of 5 Battalion Commanders in this Brigade. Joe demonstrated superior leadership and understanding of all aspects of command

PART V - INTERMEDIATE RATER

PART VI - SENIOR RATER

a. POTENTIAL COMPARED WITH OFFICERS SENIOR RATED IN SAME GRADE (OVERPRINTED BY DA)

MOST QUALIFIED (limited to 49%)

HIGHLY QUALIFIED

QUALIFIED

NOT QUALIFIED

b. I currently senior rate _____ Army Officers in this grade.

c. COMMENTS ON POTENTIAL:

LTC X displays incredible potential. He is among the top 10 LTCs in the division. Promote to Colonel ahead of his peers send to resident Senior Service Staff College. He clearly displays brigade command potential.

d. List 3 future SUCCESSIVE assignments for which this Officer is best suited:

Brigade Commander, CMTC OC, TSC G4

- Senior Rater Comments are mandatory.
- Have up to 5 lines of narrative text to comment on Potential only.
- This field captures the Senior Rater's passion (or lack thereof) for the rated officer
- Use exclusive narrative, enumeration & recommendations for promotion, schooling, command recommendation for Most Qualified Potential Indications.
- Use strong narrative for use of Highly Qualified indications and consider promotion, schooling, command recommendation.
- Remember, what is not said can have as much impact as what is said.

- Senior Raters will list up to 3 future "successive" assignments looking 3-5 years out.
- They do not have to list assignments when "both" rating officials assessments deem the rated officer to be "UNSATISFACTORY" and "NOT QUALIFIED".



Senior Rater Box Check



d2. Provide narrative comments which demonstrate performance regarding field grade competencies and attributes in the Rated Officer's current duty position. (i.e. demonstrates excellent presence, confidence and resilience in expected duties and unexpected situation, adjusts to external influence on the mission or tasks and organization, prioritizes limited resources to accomplish mission, proactive in developing others through individual coaching counseling and mentoring, active learner to master organizational level knowledge, critical thinking and visioning skills, anticipates and provides for subordinates on-the-job needs for training and development, effective communicator across echelons and outside the Army chain of command, effective at engaging others, presenting information and recommendations and persuasion, highly proficient at critical thinking, judgment and innovation, proficient in utilizing Army design method and other to solve complex problems, uses all influence techniques to empower others; proactive in gaining trust in negotiations, remains respectful, firm and fair. Fully supports SHARP and creates a positive command/workplace environment.)

COMMENTS:
LTC X is a top performer who unfailingly analyzes situations and executes my intent. Joe is a confident and capable leader who, regardless of obstacles, always produces great results. LTC X is an influential leader across the brigade who carefully employs well-thought plans and delegates tasks that empower his subordinates with the authority to complete. Soldiers willingly follow his lead.

e. This Officer's overall Performance career. Managed at less than 50% I currently rate _____ Army Officer A completed DA Form 67-10-1A w EXCELS (49%) <input type="checkbox"/>	HQDA COMPARISON OF THE SENIOR RATER'S PROFILE AT THE TIME THIS REPORT PROCESSED	ade whom you have rated in your below)
= Current C	HIGHLY QUALIFIED	standing of all
Not Adver	RO: LTC SMITH JOE999999999 SR: MG BUCKMILL 666666666 DATE: 20131201 TOTAL RATINGS: 20 RATINGS THIS OFFICER : 2	

a. POTENTIAL COMPARED WITH OFFICERS SENIOR RATED IN SAME GRADE (OVERPRINTED BY DA) <input type="checkbox"/> Most Qualified (limited to 49%) <input type="checkbox"/> Highly Qualified <input type="checkbox"/> Qualified <input type="checkbox"/> Not Qualified	b. I currently senior rate _____ Army Officers in this grade. c. COMMENTS ON POTENTIAL: LTC X displays incredible potential. He is among the top 10 LTCs in the division. Promote to Colonel ahead of his peers send to resident Senior Service Staff College. He clearly displays brigade command potential.
	d. List 3 future SUCCESSIVE assignments for which this Officer is best suited: Brigade Commander, CMTC OC, TSC G4

- Four box profile system; provides more options for senior raters
 - Highly Qualified and Qualified enable greater stratification
- Most Qualified is limited to less than 50%

MOST QUALIFIED: Strong potential for BZ and CMD; potential ahead of peers

HIGHLY QUALIFIED: Strong potential for promotion with peers

QUALIFIED: Capable of success at the next level; promote if able

NOT QUALIFIED: Not recommended for promotion



Completed Senior Rater Section

<p>a. POTENTIAL COMPARED WITH OFFICERS SENIOR RATED IN SAME GRADE (OVERPRINTED BY DA)</p>	<p>b. I currently senior rate <u>3</u> Army Officers in this grade.</p>
<p>HQDA COMPARISON OF THE SENIOR RATER'S PROFILE AT THE TIME THIS REPORT PROCESSED</p>	<p>c. COMMENTS ON POTENTIAL:</p> <p>MAJ Smith is the #1 of the 3 Majors I senior rate. Personally selected to lead a forward deployed Personnel Service and Support Mission. A grounded leader who shares in his Soldiers' sacrifices and challenges. Must select below the zone to LTC, Command and early attendance at the War College</p>
<p>MOST QUALIFIED</p>	<p>d. List 3 future <u>SUCCESSIVE</u> assignments for which this Officer is best suited:</p> <p>BN CDR; Division G1, DA G1 Staff</p>

18

Reinforcing Rules:

- **First single top box** at a given grade will generate an **MOST QUALIFIED** label at DA, regardless of profile (of the first four OERs in a grade, by component, any one, but only one, can be an MOST QUALIFIED.)
- **Cannot mention box check in the narrative**
- **Restarts by grade, with SR's permission, after 3 reports and a documented misfire in that grade have been processed at HQDA**



Managed Profile Technique (the comparison of box check to SR profile)

SENIOR RATER BOX CHECK

LABEL

**R
U
L
E
1**

b. POTENTIAL COMPARED WITH OFFICERS SENIOR RATED IN SAME GRADE (OVERPRINTED BY DA)

MOST QUALIFIED
Limited to less than 50%

HIGHLY QUALIFIED

QUALIFIED

UNQUALIFIED



HQDA COMPARISON OF THE SENIOR RATER'S PROFILE AND BOX CHECK AT THE TIME THIS REPORT PROCESSED

HIGHLY QUALIFIED

RO: MAJ SMITH BILL XXXXXXXXXX
SR: LTC BUCKMILL XXXXXXXXXX
DATE: 20140401
TOTAL RATINGS: 20
RATINGS THIS OFFICER: 20

Regardless of profile

b. POTENTIAL COMPARED WITH OFFICERS SENIOR RATED IN SAME GRADE (OVERPRINTED BY DA)

MOST QUALIFIED
Limited to less than 50%

HIGHLY QUALIFIED

QUALIFIED

UNQUALIFIED

NOT REFERRED



HQDA COMPARISON OF THE SENIOR RATER'S PROFILE AND BOX CHECK AT THE TIME THIS REPORT PROCESSED

QUALIFIED

RO: MAJ SMITH BILL XXXXXXXXXX
SR: LTC BUCKMILL XXXXXXXXXX
DATE: 20140401
TOTAL RATINGS: 20
RATINGS THIS OFFICER : 2



Managed Profile Technique (the comparison of box check to SR profile)

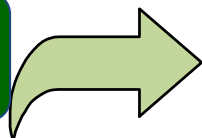
Top block check gets ONE of two labels...

Process at DA

PROFILE IS

3 17 0 0 20

TOTAL



b. POTENTIAL COMPARED WITH OFFICERS SENIOR RATED IN SAME GRADE (OVERPRINTED BY DA)

MOST QUALIFIED
Limited to less than 50%

HIGHLY QUALIFIED

QUALIFIED

UNQUALIFIED

HQDA COMPARISON OF THE SENIOR RATER'S PROFILE AT THE TIME THIS REPORT PROCESSED
MOST QUALIFIED
RO: MAJ SMITH, BOB 9999 SR: LTC BUCKMILL 6677 DATE: 20140401 TOTAL RATINGS: 20 RATINGS THIS OFFICER : 2

R
U
L
E
2

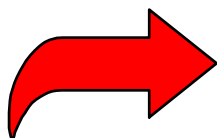
- Top block check labeled "Most Qualified" when...
- profile is less than 50% in top block
- Board sees only label and narrative

Process at DA

PROFILE IS

10 10 0 0 20

TOTAL



HQDA COMPARISON OF THE SENIOR RATER'S PROFILE AT THE TIME THIS REPORT PROCESSED
HIGHLY QUALIFIED
RO: MAJ SMITH, BOB 9999 SR: LTC BUCKMILL 6677 DATE: 20140401 TOTAL RATINGS: 20 RATINGS THIS OFFICER : 2

R
U
L
E
3

- Top block check labeled "highly qualified" when...
- profile is equal to or more than 50% in top block
- Board sees only label and narrative



Example of the EES Warning

Senior Rater Misfire warning for 67-10-1/2 with Most Qualified indication.

CONDITION: Senior Rater is making a "Most Qualified" indication on the 67-10-1/2 Form (WO1-LTC) in the Evaluation Entry System (EES). The system (EES) calculates an indication of MOST QUALIFIED will result in a MISFIRE:

MISFIRE DEFINITION = (#Most Qual/Total #reports is equal to or greater than 50%)

“YOUR SELECTION OF “MOST QUALIFIED” MAY RESULT IN A DOCUMENTED “MISFIRE” AS YOUR SENIOR RATER PROFILE DOES NOT SUPPORT. YOUR SENIOR RATER PROFILE IS ACCURATE AS OF (SYSTEM DATE TIME=NOW). IF EVALUATION REPORTS HAVE BEEN SUBMITTED BY ALTERNATE METHODS (e.g. MAIL, SIPR OR NIPR) AND THE RATED OFFICER’S NAME WITH THE MOST RECENT THRU DATE IS NOT INCLUDED ON YOUR PROFILE, HRC HAS NOT RECEIVED OR PROCESSED THAT EVALUATION. ONCE RECEIVED AND SUCCESSFULLY PROCESSED, THE RATED OFFICERS NAME WILL BE INCLUDED IN YOUR PROFILE AND YOUR MOST QUALIFIED BOX CHECK MAY BECOME AVAILABLE. BY SUBMITTING THIS REPORT, YOU UNDERSTAND THAT THIS EVALUATION WILL RECEIVE A HQDA LABEL OF “HIGHLY QUALIFIED” AND DOCUMENTED AS AN “OFFICIAL MISFIRE” AND NOTICE MAY BE PLACED IN YOUR AMHRR. YOUR PROFILE WILL INCREMENT IN THE MOST QUALIFIED TOTAL AS INDICATED ON THE FORM AND WILL NOT BE COUNTED IN THE HIGHLY QUALIFIED TOTALS. IF YOU HAVE OTHER EVALUATIONS TO PROCESS (MAIL OR ELECTRONIC) THAT WOULD ALLOW THIS REPORT TO PROCESS WITH THIS BOX CHECK, PROCESS THOSE FIRST.”



Small Population / Immature Profile

SELECTION BOARD INSTRUCTIONS:

- (1) Check DA label: "Total Ratings" (5 or less = immature profile)
- (2) Check Box in VIIa - same grade in population (3 OR LESS = Small Population)
- (3) Expect Highly Qualified
- (4) Focus on "Narrative"

Small Population

a. POTENTIAL COMPARED WITH OFFICERS SENIOR RATED IN SAME GRADE (OVERPRINTED BY DA)	b. I currently senior rate <u>3</u> Army Officers in this grade.
HQDA COMPARISON OF THE SENIOR RATER'S PROFILE AT THE TIME THIS REPORT PROCESSED	c. COMMENTS ON POTENTIAL:
HIGHLY QUALIFIED	MAJ Smith is the #1 of the 3 Majors I senior rate. Personally selected to lead a forward deployed Personnel Service and Support Mission. A grounded leader who shares in his Soldiers' sacrifices and challenges. Must select below the zone to LTC, Command and early attendance at the War College
RO: MAJ SMITH, BOB 9999 SR: COL BUCKMILL 6677 DATE: 20140401 TOTAL RATINGS: <u>2</u> RATINGS THIS OFFICER : 1	d. List 3 future <u>SUCCESSIVE</u> assignments for which this Officer is best suited:

Immature

Expect Highly Qualified – Use Narrative

Label Never Shows Downturn in Performance

<p>a. POTENTIAL COMPARED WITH OFFICERS SENIOR RATED IN SAME GRADE (OVERPRINTED BY DA)</p>	<p>b. I currently senior rate <u>1</u> Army Officers in this grade.</p>
<p>HQDA COMPARISON OF THE SENIOR RATER'S PROFILE AT THE TIME THIS REPORT PROCESSED</p>	<p>c. COMMENTS ON POTENTIAL:</p> <p>MAJ Smith is the best Major I have seen in 25 years of service. Personally selected to serve at the Army level, MAJ Smith is articulate and possesses the vision to lead large and complex organizations. Must select below the zone to LTC, Command and early attendance at the War College</p>
<p>MOST QUALIFIED</p>	<p>d. List 3 future <u>SUCCESSIVE</u> assignments for which this Officer is best suited:</p> <p>Battalion Command, Joint Staff, Brigade Command</p>
<p>RO: MAJ SMITH, BILL 9999</p> <p>SR: COL BUCKMILL 6677</p> <p>DATE: 20131201</p> <p>TOTAL RATINGS: 1</p> <p>RATINGS THIS OFFICER: 1</p>	

**SAME
Senior
Rater**

<p>a. POTENTIAL COMPARED WITH OFFICERS SENIOR RATED IN SAME GRADE (OVERPRINTED BY DA)</p>	<p>b. I currently senior rate <u>1</u> Army Officers in this grade.</p>
<p>HQDA COMPARISON OF THE SENIOR RATER'S PROFILE AT THE TIME THIS REPORT PROCESSED</p>	<p>c. COMMENTS ON POTENTIAL:</p> <p>MAJ Smith continues to be the best Major with whom I have served. A trusted leader and advisor whose critical thinking and analytical skills are already at a strategic level. Must select below the zone to LTC, Command and early attendance at the War College</p>
<p>HIGHLY QUALIFIED</p>	<p>d. List 3 future <u>SUCCESSIVE</u> assignments for which this Officer is best suited:</p> <p>Battalion Command, Joint Staff, Brigade Command</p>
<p>RO: MAJ SMITH, BOB 9999</p> <p>SR: BG BUCKMILL 6677</p> <p>DATE: 20150401</p> <p>TOTAL RATINGS: 2</p> <p>RATINGS THIS OFFICER : 2</p>	

**Use
The
Narrative**

Label Never Shows Downturn in Performance

<p>a. POTENTIAL COMPARED WITH OFFICERS SENIOR RATED IN SAME GRADE (OVERPRINTED BY DA)</p>	<p>b. I currently senior rate <u>10</u> Army Officers in this grade.</p>
<p>HQDA COMPARISON OF THE SENIOR RATER'S PROFILE AT THE TIME THIS REPORT PROCESSED</p>	<p>c. COMMENTS ON POTENTIAL:</p> <p>MAJ Smith is the #1 of the 10 Majors I senior rate. Personally selected to lead a forward deployed Personnel Service and Support Mission. A grounded leader who shares in his Soldiers' sacrifices and challenges. Must select below the zone to LTC, Command and early attendance at the War College</p>
<p>MOST QUALIFIED</p>	<p>d. List 3 future <u>SUCCESSIVE</u> assignments for which this Officer is best suited:</p> <p>Battalion Command, Joint Staff, Brigade Command</p>
<p>RO: MAJ SMITH BILL 9999</p> <p>SF: COL BUCKMILL 6677</p> <p>DATE: 20131201</p> <p>TOTAL RATINGS: 20</p> <p>RATINGS THIS OFFICER : 2</p>	

Different Senior Raters

<p>a. POTENTIAL COMPARED WITH OFFICERS SENIOR RATED IN SAME GRADE (OVERPRINTED BY DA)</p>	<p>b. I currently senior rate <u>10</u> Army Officers in this grade.</p>
<p>HQDA COMPARISON OF THE SENIOR RATER'S PROFILE AT THE TIME THIS REPORT PROCESSED</p>	<p>c. COMMENTS ON POTENTIAL:</p> <p>MAJ Smith is the #1 of the 10 Majors I senior rate. A natural and confident leader whose judgment and vision surpass that of his peers. Select below the zone to LTC, select for Battalion Command and the Army War College</p>
<p>HIGHLY QUALIFIED</p>	<p>d. List 3 future <u>SUCCESSIVE</u> assignments for which this Officer is best suited:</p> <p>Battalion Command, Joint Staff, Brigade Command</p>
<p>RO: MAJ SMITH BILL 9999</p> <p>SF: COL BOREK 0737</p> <p>DATE: 20150401</p> <p>TOTAL RATINGS: 02</p> <p>RATINGS THIS OFFICER : 1</p>	

Use The Narrative



Evaluations Summary

Purpose of Evaluations: Identify our Army's best performers and those with the greatest potential. They help:

Maintain discipline

Promote leader development/professionalism by linking performance to missions and doctrine (assessed by field leaders)

Provide feedback to rated individuals **counseling is critical

Leader must know how the system works, know when reports are due and have a rating philosophy

NARRATIVES - THEY ARE THE KEY to the system 99.008% of all Officers have at least one DA67-9 Center of Mass report and we expect use of Highly Qualified to remain consistent.

67-10 OERs:

- "Highly Qualified" ratings will be the norm
- Small populations/immature profile are common in any profile system
- Label never shows down-turn in performance.



BACK UP



Evaluation Entry System – Landing Page

- The Evaluations Entry System consolidates AKO MyForms, Army Forms, and reporting and tracking tools and profile monitoring from 4 different locations (websites) across the Army to one location

Evaluation Entry System
U.S. Army Human Resources Command

Main Menu ▾ Profiles ▾ New OER Training ▾

Support Links:

Evaluation Support and Help

- [Evaluation and Training Tools](#)
- [Appeals and Corrections](#)
- [Evaluation Entry System Users Guide](#)
- [Ask an Expert](#)
- [Frequently Asked Questions](#)

External Links and Resources

- [AR 623-3](#)
- [DA PAM 600-3](#)
- [DA PAM 600-4](#)
- [DA PAM 623-3](#)
- [S1 NET](#)
- [MYBOARDFILE](#)
- [ERS](#)
- [User Survey and Feedback](#)
- [Army Doctrine](#)
- [Army Doctrine References](#)

Welcome to the HRC Evaluations Entry System
Please select an option below:

OER

Create OER Support Form

Edit OER Support Form

Create New OER

NCOER

Create NCOER Support Form

Edit NCOER Support Form

Create New NCOER

TOOLS

Continue/View Active Evaluations

View Profiles where I am a delegate

Manage Rating Chain

Signature Removal

Evaluation Status and Management Tools (ERS)

View my Rater and Senior Rater Profile

View Forms

Manage Delegates

Recent Evaluation Activity:

Rated Soldier	Your Role	Thru Date	Status
BOREK, BRIAN LTC	RATER		DRAFT
MATHIAS, JOHNNY LTC	DELEGATE	20140407	ACCEPTED/IPERMS
LASSITER, GLENDORF 1LT	DELEGATE	20140403	w EXAMINER
WILHELMS, NATHAN MAJ	SENIOR RATER	20141104	DRAFT
BOREK, BRIAN LTC	RATER	20140508	DRAFT

Recent Evaluation Support Form Activity:

Rated Soldier	Role	Thru Date
BOREK, BRIAN LTC	RATER	20130502
WILLIE, COREY MAJ	DELEGATE	20130505
PETE, ANTHONY MAJ	RATER	20130704
MINGES, EDWIN CPT	DELEGATE	20130402
PINKSTAFF, WINFIELD CPT	DELEGATE	20130526
BROWN, JAMES CPT	DELEGATE	20130414

Support links

10 most current Evaluations

Doctrine & Regulations

10 most current Support Forms



Evaluation Entry System – Landing Page

Center Section

OER	NCOER
Create OER Support Form	Create NCOER Support Form
Edit OER Support Form	Edit NCOER Support Form
Create New OER	Create New NCOER

TOOLS

Continue/View Active Evaluations	Evaluation Status and Management Tools (ERS)
View Profiles where I am a delegate	View my Rater and Senior Rater Profile
Manage Rating Chain	View Forms
Signature Removal	Manage Delegates

Shows ALL active evaluations related to you as: Rater, Senior Rater, or Delegate.

Allows delegates to view Rater or Senior Rater profile (if delegated).

Allows signature removal if correction or amendment is required

Shows your Rater & Senior Rater Profile.

* Names associated with profile will be added at a later date – similar to the DASH 2 report

Allows Senior Rater or Rater to add Delegates who can draft, edit and submit reports on your behalf

DELEGATES CANNOT SIGN FOR YOU



Evaluation Entry System

U.S. Army Human Resources Command



Main Menu ▾

Manage Delegates

Delegates for **YOUR NAME** in the role of SENIOR RATER ▾

	Name	Manage Delegates	View Rating Profile	Edit and Submit Evaluations	Start	End	
1.	Benjamin Schrooten	<input checked="" type="checkbox"/>	<input checked="" type="checkbox"/>	<input checked="" type="checkbox"/>	20131217	20141217	<input type="button" value="Remove"/>
2.	Anthony Pete	<input checked="" type="checkbox"/>	<input checked="" type="checkbox"/>	<input checked="" type="checkbox"/>	20131127	20141127	<input type="button" value="Remove"/>
3.							
4.							
5.							
6.							
7.							
8.							
9.							
10.							

Instructions

Delegation allows Raters and Senior Raters to designate authority for the processing of evaluations in their organization. Creating delegates will allow up to two delegates to see/manage the Senior Rater's Profile or the Rater's Profile (The delegates must be authorized access to each profile individually).

Select the box under "View Rating Profile" to authorize viewing of the Senior Rater or Rater Profile

Only two delegates may be authorized to add names to this list. If "Manage Delegates" is checked, Up to two individuals will be authorized to add other administrative personnel authorized to assist in the preparation and submission of evaluations.

Select the box under "Manage Delegates" to authorize adding names to this list.

Up to ten delegates may be authorized to assist in the preparation and submission of evaluations on your behalf after signatures are applied.

Select the box under "Edit and Submit Evaluations" to authorize assistants in the preparation and submission of evaluations.

SGS, ADMIN
S1, 420 series,
PAC NCO or SGS

Evaluations
Clerks, Other

Above the line allows 2 personnel who can add additional delegates, View profile, edit and submit.

Below the line, allows visibility, edit and submit capability (once signed).



O-4 Broadening Experiences

Functional

- ASCC
 - OPS/Plans Officer
 - WFF Chief
- ASA/DCS
 - Asst XO
 - ADC
 - Division Chief (BR/FA Specific)
- USACE
 - DCO
- ARCIC WFF Chief/Manager
- AMC
 - COCOM LNO
 - OCLL LNO
- CTC
 - Senior OC-T
 - JRTC Village Stability Director
- AC/RC OC-T
- DA/ASA/DCS
 - Division Chief
 - Director.
- AWG (Forward Ops Chief)
- TRADOC
 - CAC WFF Chief/SME

Institutional

- CIG Action Officer
- SA/CSA/ASA/DCS
 - Asst XO
 - ADC
 - Special Assistant
 - Strategic Plans Officer
 - AOC Action Officer
 - Speech writer
- DA Staff Asst XO
- HRC Branch Chief
- AWC Staff
- CGSC Faculty
- Recruiting Command HQs (BDE XO, S3)
- TRADOC HQs (LNO, ARCIC Chief, DIV Chief)
- CAC
 - DIV Chief
 - Doctrine Dev
 - CDID Project Officer
 - Exercise Officer
 - Action Officer
- ASCCs
 - OPS/Plans Officer
- Cadet Command HQs
- USAREC HQs
- 1st Army/5th Army Staff
- FORSCOM HQs

Academia & Civilian Enterprise

- Fellowships
- PMS/APMS
- USMA Faculty/Staff
 - Directorate
 - BTO
- Training With Industry

JIIM

- AIDE TO PRES/VP
- COCOM/Joint Staff Asst XO
- COCOM HQs Commandant
- UN Staff Officer
- DCE Region OPS Officer
- DOS Defense Trade Analyst
- OSD
 - Analyst
 - Planner
 - Emergency Ops officer Assistant
 - Watch Officer
- COCOM/Joint Staff
 - Analyst
 - OPS/PLANS/JOC
 - WFF Chief
 - Chiefs/Liaisons
 - IA Liaisons
 - Watch Officer
- NORTHCOM Regional Support Chief
- State IG
- OCLL Liaison
- Sister Service Faculty
- TRADOC Sister Service LNO
- Transition Team
- Military Observer
- Allied Program Manager
- NGB Staff
- CGSC IA Fellow

O-5 Broadening Experiences

Functional

- ASCC
 - OPS/Plans Officer
 - WFF Chief
- ASA/DCS
 - Asst XO
 - ADC
 - Division Chief (BR/FA Specific)
- USACE
 - DCO
- ARCIC WFF Chief/Manager
- AMC
 - COCOM LNO
 - OCLL LNO
- CTC
 - Senior OC-T
 - JRTC Village Stability Director
- AC/RC OC-T
- DA/ASA/DCS
 - Division Chief
 - Director.
- AWG (Forward Ops Chief)
- TRADOC
 - CAC WFF Chief/SME

Institutional

- CIG Action Officer
- SA/CSA/ASA/DCS
 - Asst XO
 - ADC
 - Special Assistant
 - Strategic Plans Officer
 - Speech writer
- DA Staff Asst XO
- HRC Branch Chief
- AWC Staff
- CGSC Faculty
- Recruiting Command HQs (BDE XO, S3)
- TRADOC HQs (LNO, ARCIC Chief, DIV Chief)
- CAC
 - DIV Chief
 - Doctrine Dev
- ASCCs
 - OPS/Plans Officer
- Cadet Command HQs
- USAREC HQs
- 1st Army/5th Army
- IMCOM
- CSA Strategic Studies Group
- Army Strategic Planner
- FORSCOM HQs

Academia & Civilian Enterprise

- Fellowships
- PMS/APMS
- USMA Faculty/Staff
 - RTO
 - Instructor
 - HQs/Staff
- AWC Faculty
- CGSC Faculty

JIIM

- AIDE TO PRES/VP
- COCOM/Joint Staff Asst XO
- COCOM HQs Commandant
- JCS Regional COCOM Desk Chief
- OSD
 - Analyst
 - Planner
 - Strategist
 - Desk Chief
 - POL-MIL Planner
 - Military Assistant
 - Speechwriter
- COCOM/Joint Staff
 - Division Chief
 - TNG/Readiness
 - OPS/PLANS/JOC
 - WFF Chief
 - Chiefs/Liaisons
 - IA Liaisons
- NORTHCOM Regional Support Chief
- State IG
- OCLL Liaison
- Sister Service Faculty
- TRADOC Sister Service LNO
- Transition Team
- Military Observer
- Allied Program Manager
- NGB Staff

O-6 Broadening Experiences

Functional

- ASCC
 - Division Chief
 - Red Team
 - OPS
 - Plans
 - IG
- ASA/DCS
 - XO
 - Mil Assistant
 - Division Chief (BR/FA Specific)
- USACE
 - DCO
- TRADOC Capabilities Mgr
- AMC
 - Command Directors
 - PM
 - COS
 - XO
- CTC COG
- DA/ASA/DCS
 - Division Chief
 - Director.

Institutional

- HRC CIG Chief
- SA/CSA/ASA/DCS
 - XO
 - Mil Assistant
 - Division Chief (BR/FA Specific)
- DA Staff XO
- HRC DIV Chief
- CAC Director
- AWC Director
- CGSC Faculty
- Recruiting Command HQs
- TRADOC HQs
- CAC Director
 - CAL
 - COIN
 - DTAC
 - SAMS
- ASCCs
 - Division Chief
- Cadet Command HQs
- USAREC HQs
- 1st Army/5th Army
- IMCOM
- CSA Strategic Studies Group
- Army Strategic Planner
- FORSCOM HQs

Academia & Civilian Enterprise

- SSC Fellowships
- PMS
- USMA Faculty/Staff
- AWC Faculty
- CGSC Faculty
- SAMS Faculty

JIIM

- AIDE TO VP
- COCOM/Joint Staff XO
- JCS Regional COCOM Desk Chief
- OSD
 - Analyst
 - Planner
 - Strategist
 - Desk Chief
 - POL-MIL Planner
 - Military Assistant
- COCOM/Joint Staff
 - Division Chief
 - TNG/Readiness
 - OPS/PLANS
 - IG
 - Special OPS Chiefs/Liaisons
 - IA Liaisons
- DOS Desk Chief
- AWC Director Joint Multi-national studies
- CAC Joint Allied Studies
- Defense Coordination Officer
- State IG
- OCLL Director/Liaison
- ALSA Director
- Sister Service Faculty
- Allied PM Foreign Mil Sales
- DISA DIV Chief

O-3 Broadening Experiences

Functional

- ASCC
 - OPS/Plans Officer
 - WFF Chief
- CTC
 - OC-T
- AC/RC
 - OC-T
- TRADOC
 - SGL
 - Training/Ops officer
- INSCOM
 - G2 Watch Officer

Institutional

- CIG Action Officer
- SA/CSA/ASA/DCS
 - ADC
 - Special Assistant
- HRC
 - Assignment Officer
 - HQs
- TRADOC
 - Ops Officer
 - Analyst
- CAC
 - Doctrine Dev
 - Project Officer
 - Officer
 - Action Officer
- ASCCs
 - OPS/Plans Officer
- USAREC
 - Staff
 - Company CMD

Academia & Civilian Enterprise

- Fellowships
- ACS
- Training with Industry
- APMS
- USMA Faculty/Staff
 - TAC
 - Instructor

JIIM

- JCS Intern
- PEOC Watch Officer
- OSD
 - Watch Officer
- Transition Team